

ARCHAEOLOGY



A PROJECT BY

**Candice Collard, Cynthia Campbell, Dallas McCaman,
Jamiee Powell, Jeff Bunk, Kaley Wall, and Sarah Marks**

WHAT IS ARCHAEOLOGY?

“Archaeology is the study of human activity in the past, primarily through the recovery and analysis of the material culture and environmental data that humans have left behind, which include artifacts, architecture, eco-facts and cultural landscapes.”





ARCHAEOLOGY AND THE UNIVERSITY OF UTAH

UNDERGRADUATE

- Undergraduate study:

- University of Utah:

- Excellent training for those interested in pursuing a graduate degree in anthropology; specified courses for those with an interest in archaeology
- Interesting and imaginative course of study for those desiring a better understanding of the study of historic or prehistoric peoples and their cultures by analysis of artifacts

- Range Creek Archaeology Field School

- Undergraduate Advisor: Sandra McCarthy

- Undergraduate programs vary:

- <http://www.archaeological.org/fieldnotes/resources?type=undergrad>

- Students will be able to obtain advice from school college counselors/ careers services and from the colleges themselves concerning a degree in a particular branch of archaeology



UNDERGRADUATE CONTINUED

Summer 2014: Anthropological Archaeology of Ancient Egypt, 3329

Fall 2014: Mesoamerican Archaeology, 3322; Archaeology, 2030

Classes for Spring semesters include: Fundamentals of Archaeology, 4341;
and Zooarchaeology, 4372

GRADUATE PROGRAM

- Graduate study: Selecting a graduate school is an important step toward becoming a professional archaeologist
 - University of Utah:
 - The Anthropology department offers graduate training (M.A., M.S., M. Phil. and Ph.D.) in Archaeology
 - Students are encouraged to become involved in research early in their training.
 - Students are encouraged to contact directly the faculty member(s) with whom they wish to work.
 - Graduate Advisor: Rick Paine
 - Requirements for entry into Ph.D. graduate program:
 - Acceptance to graduate program depends as much on the fit between student and faculty interests as it does on student qualification
 - Students who have passed their master's exam in Anthropology at the University of Utah will be admitted to the Ph.D. program
 - Complete coursework, qualifying examination, and dissertation
 - Graduate programs in the US and Canada:
 - <http://www.archaeological.org/professionals/gradprograms>
 - Identify institutions that appear to meet your needs and desired path
 - Students should contact specific faculty members whose research most closely matches their own interests
 - Inquire about current and future research and educational opportunities at school of interest

GRADUATE PROGRAM CONTINUED

Required Coursework for students receiving a Master's in Anthropology

Proseminar Series (ANTH 6100, 6200, 6300, 6400)

All Graduate students are expected to have basic proficiency in statistics.


Archaeology

ANTH 5461 – Behavioral Ecology & Anthropology

ANTH 6342 – History of Archaeology (Recommended)

ANTH 6361 – Behavioral Ecology & Archaeology

ANTH 6381 – Archaeology Practice

An aerial photograph of an archaeological excavation site. Several people are seen kneeling or sitting on the ground, working on the site. They are surrounded by various tools and equipment, including buckets, sieves, and measuring tapes. The ground is sandy and shows signs of excavation, with some rectangular areas marked out. The overall scene depicts a hands-on learning experience in archaeology.

ADDITIONAL EDUCATION IN ARCHAEOLOGY

BIOARCHAEOLOGY



Bioarchaeology is a specialized type of physical or biological anthropology. The study of human skeletal remains from archaeological sites allows for the reconstruction of past human activities, disease, and overall health patterns.

Like most aspects of Anthropology, Bioarchaeology is holistic. It is a blend of multiple academic disciplines, including...

Paleodemography: The study of demography of ancient populations

Paleogenetics: The application of genetics to paleontology

Mortuary Studies: The study of dead bodies.

BIOARCHAEOLOGY CONTINUED...

Bioarchaeologists analyze burials, prehistoric diets, dental anthropology, health/nutrition, and uncover clues about a persons occupations and behaviors. One of the most important things about the role of Bioarchaeologists is the understanding and explanation of these items in a historical context. Bioarchaeologists have a tendency to study marginalized groups of people such as: women, prisoners of war, and lower socioeconomic classes.

“Bioarchaeology explicitly operates from the bottom up, looking at the masses of people who weren’t always included in historical writings or iconographic images. We are fascinated by the lives of everyone at every tier of a society, so we bring to the table a much richer and more inclusive perspective on both ancient and historical peoples.”

—Dr. Bethany Turner, assistant professor of anthropology at Georgia State University,
Atlanta Georgia

SCHOOLS THAT SPECIALIZE IN BIOARCHAEOLOGY

ASU: Arizona State "School of Human Evolutions & Social Change (<http://shesc.asu.edu/graduate/bioarcheology>)

GSU: Georgia State (<http://www.cas.gsu.edu/anthropology/810.html>)

Sonoma State University, California, (<http://www.sonoma.edu/users/b/boutin/forensic.html>)

FIELD SCHOOLS IN BIOARCHAEOLOGY

Field School in Medieval Archaeology & Bioarchaeology in Italy (<http://www.fieldschoolpozzeveri.org/>)

Petra North Ridge Project (<http://www.sonoma.edu/users/b/boutin/2014%20bioarchaeology%20field%20school%20brouchure.pdf>)

Caves Branch Archeological Field School in Belize (<http://cbasproject.org/cbas/default.asp?p=6>)

UNDERWATER ARCHAEOLOGY

A blue-tinted underwater photograph showing several divers in a field setting. One diver in the foreground is kneeling on the seabed, looking at a clipboard. Other divers are visible in the background, some with scuba tanks and equipment. The scene is dimly lit, typical of an underwater environment.

Training/Schooling:

Scuba and AAUS Certified needed

Masters program in Archaeology

GIS Certificate

Nautical Archaeology Society

4 Part Training Program

Northwestern Michigan College Field School

St Mary's College of California

Bermuda Field School



GRANTS & SCHOLARSHIPS

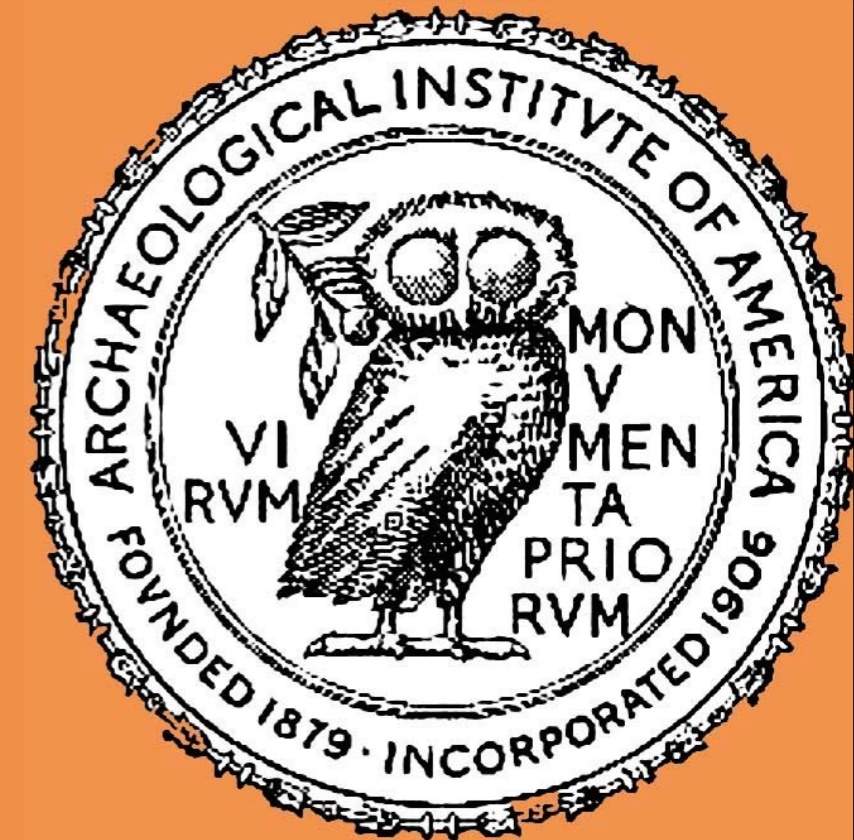
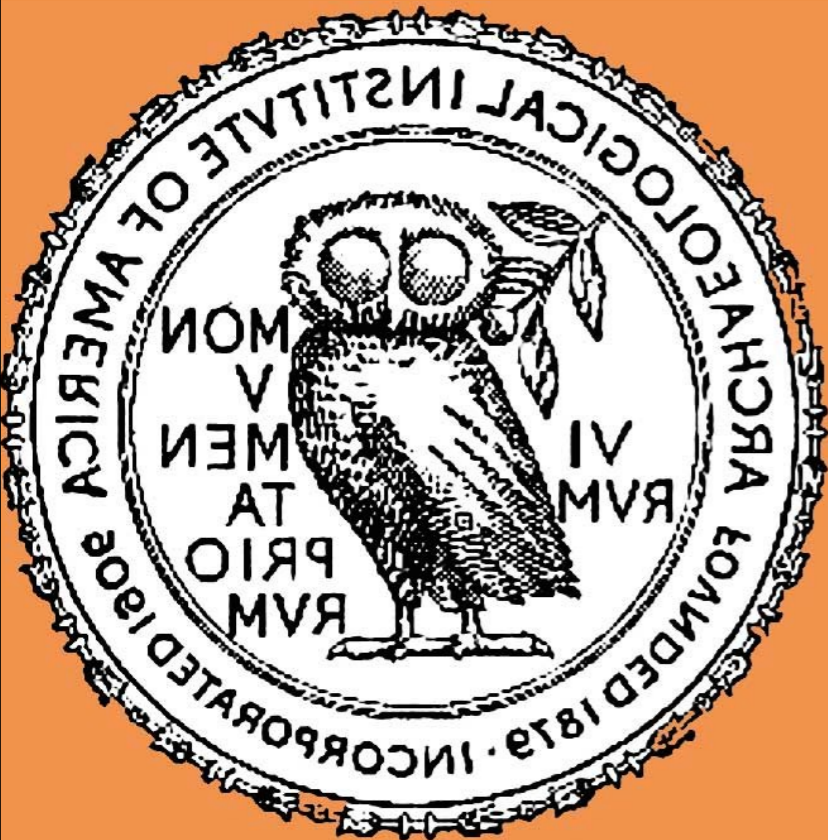
Jobs in the field of archaeology require field experience. The first step toward gaining field experience is to participate in a field school program. With the already high costs of tuition along with the general length of time field schools run (approximately 6 weeks) making a steady source of income can become quite difficult. Acquiring grants and scholarships are an excellent way to soften the blow of tuition, research and travel expenses

ARCHAEOLOGICAL INSTITUTE OF AMERICA:

Jane C. Waldbaum Archaeological Field School Scholarship—This scholarship is designed to help students planning to participate in their first archaeological field school. The Scholarship pays \$1,000 to students to help pay for expenses related to field schools, lasting a minimum of 4 weeks. Open to undergraduate students who are at least in their junior year.

Application Requirements: Provide two references (professors or advisors familiar with your work and are willing to provide letters of recommendation), provide a copy of your transcript, provide an outline of anticipated expenses, provide information about the project and include a brief, 300 word or less, essay explaining why you want to participate in the project and how it will contribute to your eventual career goals.

<http://www.archaeological.org/grants/708>



NATIONAL GEOGRAPHIC YOUNG EXPLORERS

The National Geographic Young Explorers has helped launch the careers of some of the world's up and coming young archaeologists, anthropologists and explorers (including astronomers, ecologists, conservationists, geographers and storytellers).

- Grant awards from \$2,000 to \$5,000 (Must be between ages 18-25)
- Not required to have advanced degree, although record of prior experience in pertaining field required
- Pre-application screening, followed by application screening



**ARCHAEOLOGICAL EMPLOYMENT
OPPORTUNITIES**

Cultural Resource Management (CRM) A History

- ▶ Federal Government involvement over time that included funding projects of public interest and passing legislation contributed to several expansions of archaeology in the United States. Allowing the field of archaeology to flourish and giving it its unique direction.
- ▶ Most recently the National Historic Preservation Act of 1966, specifically Section 106 in that act led to the CRM practices of today. The mandate that any undertaking that effects Federal land or uses Federal money to alter the landscape must include a review of the area to be impacted.
- ▶ That statement in the NHPA Act helped create the modern archaeology industry of the United States.

The Jobs Generated for CRM

- ▶ Governmental:
 - ▶ SHPO, BLM, National Parks, Forest Service, Army Corp of Engineers
 - ▶ Even right now there are summer seasonal jobs available for students to get hands on experience as a GS- 03/04.
 - ▶ Payment for field training, experiencing the outdoors for the summer & best of all... Getting Dirty.
 - ▶ Education level enhances position and pay. Working on a crew versus running a crew.
 - ▶ usajobs.gov
 - ▶ Private Industry: Local, National, & International Contracting Firms,
 - ▶ The government contracts work out to private companies and they need help too.
 - ▶ Technician assistant or internship potentials through researching firms and looking at their specializations.
 - ▶ Contact & Network with a volunteer opportunity; a chance to finding companies that have a needs for your area of interest. Archaeology Week May 3-10, 2014 <http://heritage.utah.gov/history>
 - ▶ shovelbums.org (lists field school opportunities as well as jobs)
 - ▶ There is an alphabetical listing of private CRM firms and the locations they cover with links to their websites at <http://www.archaeologyfieldwork.com/AFW/CRMfirms.htm>

Graduate Schools with Courses that have a CRM Focus

There is a website through the National Park Service that highlights reviewed schools that have graduate programs with specialty Archaeology and CRM course focus narrowing the field to about 58 accredited schools across the U.S.

<http://www.nps.gov/mwac/crmprog/crmprog.htm>

University of Utah, and USU locally.

Sonoma State University, NAU in Flagstaff, Arizona, Central Washington University all have CRM programs just to name a few on the West Coast.

The link below gives a broad anthropology range of graduate programs should you want to cast a wider net

<http://www.gradschools.com/search-programs/anthropology->



UNDERWATER ARCHAEOLOGY

An underwater scene featuring a diver's helmet and mask on the right side, partially obscured by a large, textured rock formation on the left. The water is a deep teal color, and the overall lighting is dim, creating a mysterious atmosphere.

Jobs:

- **Government Jobs**
 - Working for the State
 - Working for the Navy
- **Shipwreck Exploration**
 - Odyssey Marine Exploration
- **Museum Work**
 - Battleship Texas State Historic Site
 - Museum of Underwater Archaeology (URI)
- **Research Universities**
 - Texas A&M University project in Florida

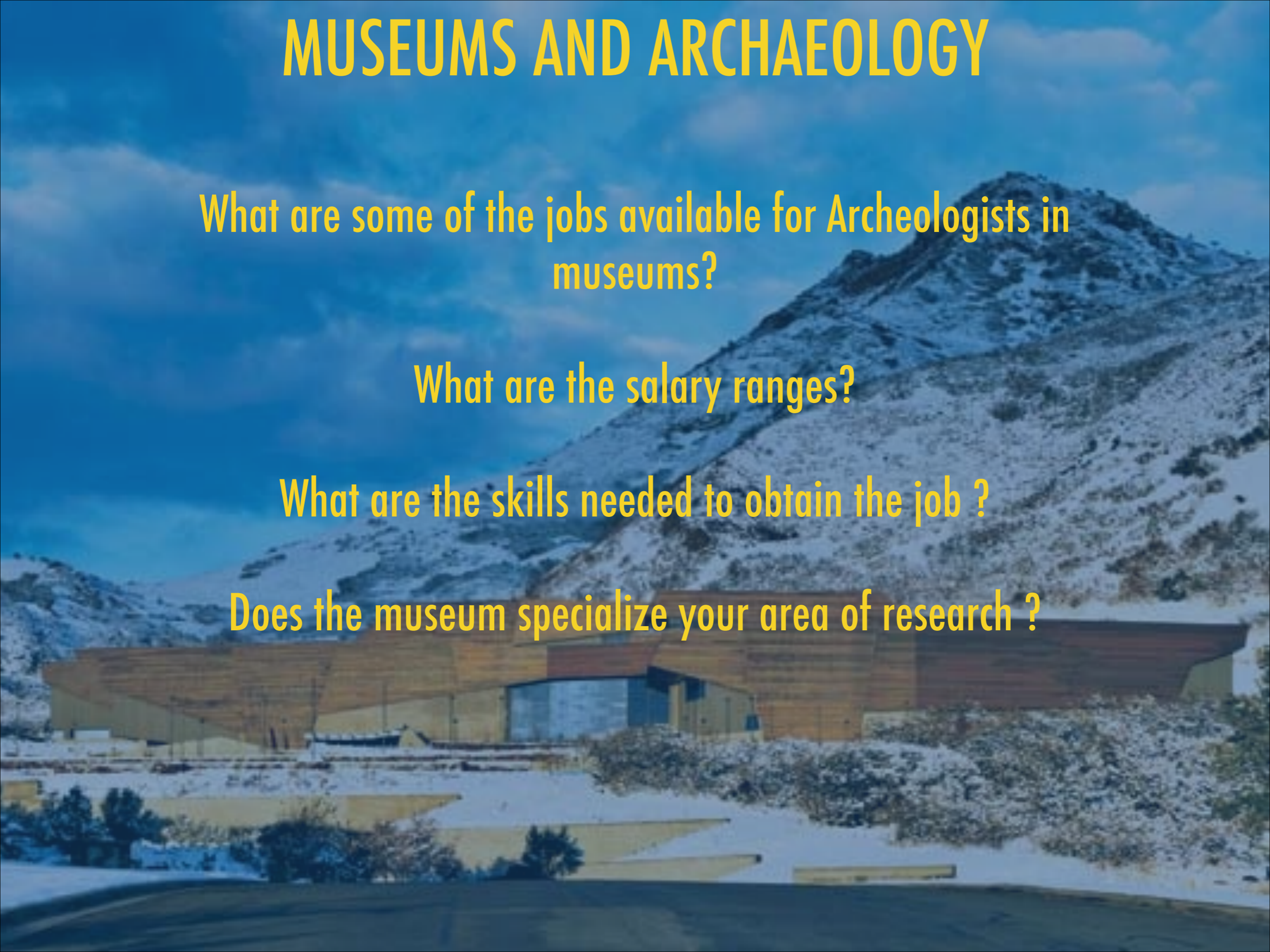
MUSEUMS AND ARCHAEOLOGY

What are some of the jobs available for Archeologists in museums?

What are the salary ranges?

What are the skills needed to obtain the job ?

Does the museum specialize your area of research ?



JOB DESCRIPTION

- What are museum archeologist required to do ?
- Act as consultants and advisors on cultural matters pertaining to the Museum and its collections.
- Be active in advisory committees .
- Mentor, teach, research and publish articles in the literature.
- Help chose ,plan, design and coordinate exhibits .
- Conserve, and preserve the collections by developing online inventories to catalog items.
- Prepare a budget. Travel with exhibitions.

PROFESSIONAL REQUIREMENTS



- M.S. or M.A. in Anthropology
- PhD. for higher level positions
- Past experience either hands-on , volunteering or through training programs or internships.
- Published works or a current thesis dissertation.
- Salary ranges from : low-\$20,000 high: \$116,000.

MUSEUM RESOURCES

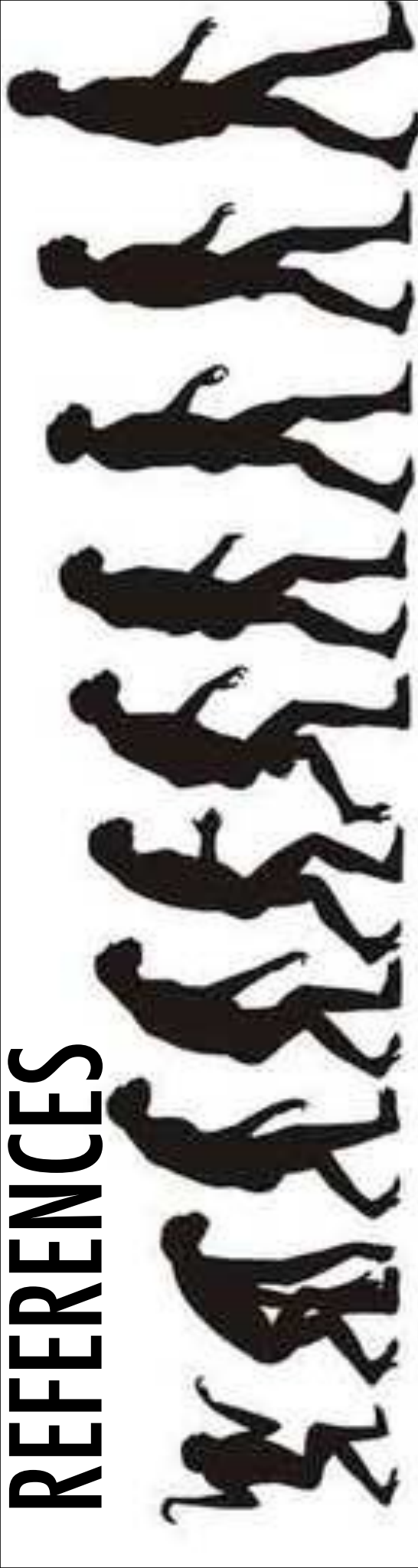
- **Museum Employment Resource Center**
- **Museum job resources online**
- **Utahskillpages.com**
- **Museum jobs Desk Website**
- **Interview : How to Get a Museum job**
- **katiestringer.wordpress.com**



A fossilized skull, likely of a primate or early hominid, is shown in a frontal view. The skull is embedded in a light-colored, sandy matrix. The eye sockets are large and dark, and the nasal cavity is visible in the center. The teeth are arranged in a dental arch, with a prominent canine tooth on each side. The text "THE END" is overlaid in white, bold, capital letters across the center of the skull.

THE END

REFERENCES



Slide #1: Pascal Guetcheluck. September 4, 2006. *Timeline: Human Evolution*. [Photograph]. <http://www.newscientist.com/article/dn9989-timeline-human-evolution.html#.U0NKftxH1SU>

Slide #2: Shamanic Teachings of the Families of the Americas. April 11, 2011. *Solutrean Lithics*. [Drawing]. <http://thelamplight.ca/schematicoftime/council15.htm>

Slide #3: UCD School of Archaeology. February 18, 2011. *UCD archaeologists uncover ancient wooden fish cage at site*. [Photograph]. <http://www.ucd.ie/news/2011/02FEB11/180211-Secrets-of-Irish-medieval-fishing-site-will-be-lost-to-the-tide.html>

Slide #5: National Park Service. March 18, 2014. *Horseshoe Bend Area, fine example of a Great Basin Desert*. [Photograph]. <http://www.nps.gov/bica/naturescience/great-basin-desert.htm>

Slide #6: Dave Webb. 2013. *Hovenweep National Monument*. [Photograph]. <http://www.utah.com/nationalsites/hovenweep.htm>

Slide #7: Backpacking Peru. 2012. *Tour to Machu Picchu*. [Photograph]. www.backpackingperu.com

Slide#8: Moonheart13. June 20, 2011. *The Solstice Project—Chaco Canyon*. [Photograph]. <http://www.paganspace.net/group/2012awareness/forum/topics/the-solstice-project-chaco-1>

Slide#9: Olduvai project. August 31, 2009. *FLK Zinj and the Zinjanthropus*. [Photograph]. <http://www.olduvaiproject.org/flk-zinj-and-the-zinjanthropus/>

Slide #12: University of Exeter. No Date. *Archaeology*. [Photograph]. <http://humanities.exeter.ac.uk/archaeology/>

Slide #14, & 22: Autodesk Vintage Image Gallery. July 2007. *Underwater Archaeology with AutoCAD*. [Photograph]. <http://www.fourmilab.ch/autofile/images/applications/pandora/>

Slide #17: National Geographic. April 2013. *Origins: Maya & Olmec*. [Photograph]. <http://meridagoround.com/?m=201304>

Slide #23: Jeff Goldberg. January 2012. *National History Museum of Utah*. [Photography]. <http://archrecord.construction.com/projects/portfolio/2012/01/natural-history-museum-utah.asp>

Slide #26: Anna Cyan Studio. 2014. *Drawing Hands Workshop*. [Drawing]. <http://seecyan.com/workshop-hands/>